

# Micro-THERM SVE Systems



Micro-THERM  
4-ft x 3-ft skid



## EQUIPMENT FEATURES

**BETTER THAN EVER!** Our Micro-THERM systems are designed to provide you with the most advanced, highest quality remediation systems for your money. Outstanding equipment design provides operators with complete diagnostics and status information, troubleshooting, electrical and PID displays, and system operating information at the touch of your fingertip.

**Flow Range:** 50 to 300 cfm, vacuums to 14" Hg

**Small Footprint:** Only 4-ft x 3.5-ft, 1400 #.

**SVE Blower:** The standard SVE Blower is rated for 220 cfm and vacuums to 14" Hg. Other blowers are also available, including 150 cfm dual phase water sealed pump to 28" Hg.

**Burner System:** All stainless steel Jet-THERM burner, max 800,000 btuh, 100:1 turndown ratio. 3-year warranty.

**Dilution Air Blower:** Enables dilution of extracted VOC's on the pressure side of the SVE blower. Enhance control of **Micro-THERM** oxidizer without losing well vacuum requirements.

**Stainless Water KO:** 25-gallon water capacity with high level switch alarm shutoff.

## OPTIONS

- Catalyst w/Module
- Water KO Auto-Pump
- 50% Heat Exchanger
- Hi-Flow SVE Blower  
370 cfm, to 15" Hg
- Hi-Vac SVE Blower  
120 cfm, to 20" Hg
- Internet Access Telemetry .
- Locking Enclosure
- LEL & Oxygen Sensor
- Open Trailer (5'x8' s-axle)



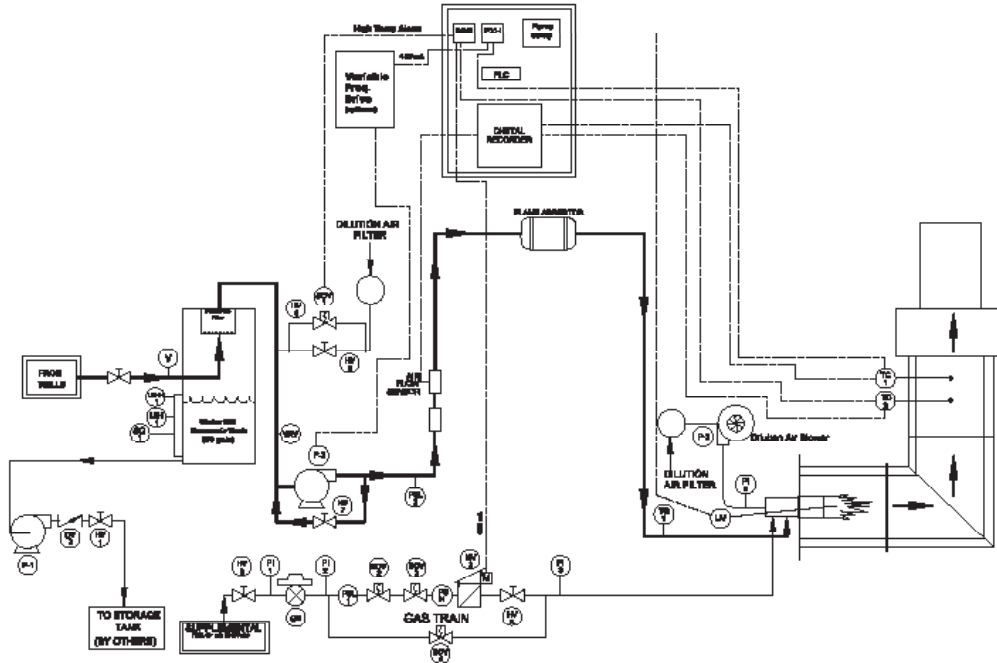
**SOIL-THERM**  
**EQUIPMENT, INC.**

5310 Derry Ave, Unit C  
Agoura Hills, CA 91301-4509  
(818) 706-9875 FAX (818) 706-2145

[www.soiltherm.com](http://www.soiltherm.com)

# Micro-THERM Remediation Systems

Each **Micro-THERM** gas-fired thermal system includes the following components: 4-ft x 3.5-ft heavy duty skid with forklift pockets, **Jet-THERM** all stainless burner, stainless steel water knockout, stainless steel vapor piping, water knockout filter element, Nema 4 electrical control box, main disconnect, regenerative SVE extraction blower (standard 8.5 hp, 220 cfm, 14" Hg), PLC control and digital display, hour meter, temperature and limit controller, air pressure switch, flame arrestor, and safety interlocks. Options include: catalyst module, heat exchanger, pressure side dilution air blower, small single axle trailer, water knockout pump, dual phase liquid ring pump, various SVE blowers, and locking enclosure.



## Equipment Specifications

VOC Processing:	to 14,000 ppmv
Destruction Efficiency:	>99+%
VOC's /hour (max):	35 #/hour
Size:	4-ft x 3.5-ft x 13-ft (H)
Weight:	~1400 lbs
Well Vapor Hookup:	2-1/2"
Electrical:	230VAC, 3-ph, 60A, 60Hz (single phase also avail.)
Natural Gas:	3/4", 300 cfh @ 2-5 psig
Propane (vapor):	3/4", 150 cfh @ 2-5 psig
Stack Height:	13-ft
Approvals:	UL 508A Certified Panel SCAQMD Certified Permit



**SOIL-THERM**  
**EQUIPMENT, INC.**

5310 Derry Ave, Unit C  
Agoura Hills, CA 91301-4509  
(818) 706-9875 FAX (818) 706-2145

(1) Specifications subject to change without notice.

[www.soiltherm.com](http://www.soiltherm.com)