

Mobile-THERM Treatment Systems



Mobile-THERM
SVE and Dual Phase Oxidizer



Mobile-THERM Premium Deluxe
SVE, Dual Phase, Air Stripper, OW-Sep, 900 cfm Thermal/
Catalytic Oxidizer, Generator, 300 gals Propane



Mobile-THERM
SVE & Air Stripper w/ Oxidizer

EQUIPMENT FEATURES

Mobile-THERM systems are the ultimate in high quality mobile treatment system technology! Each system is integrated into a deluxe locking enclosed trailer for impressive performance operations in SVE, DPE, or GW treatment modes. These systems are built to meet your demanding requirements for fast, discrete, high performance mobile extraction operations from a single system.

Trailers: Select from a wide range of trailers from 15' to 25', with optional enclosure features for your system.

Enclosure: Enclosures feature locking roll-up doors and double swing doors on the end. Premium construction and noise attenuating heavy walls provides security and discretion when operating these systems in busy areas.

SVE Extraction Blowers: Select from a wide range of SVE blowers including regenerative, positive displacement, and dual stage regenerative blowers to 20" Hg.

Dual Phase Extraction: A wide range of DPE blowers include water seal and oil seal liquid ring pumps and three stage regeneratives for 20+'' Hg vacuums.

GW Treatment & Air Strippers: A wide range of options are available for air strippers, oil water separators, filters and more.

Generator and Electrical Controls: **Mobile-THERM** systems come complete with Nema 4 control panel, PLC with digital message display, and complete operation of entire system!

Jet-THERM Burner: All stainless steel special high performance burner keeps the oxidizer small and very powerful. Twenty foot enclosed systems have housed SVE and DPE with oxidizer system for up to 1200 cfm operations!

OPTIONS

- Propane or Diesel Generator
- Dual Phase Blower (oil sealed, liquid ring,
- Catalyst with Fold-Down Stack
- Internet Access Telemetry & Control
- On-board Water Storage Tank
- LEL & Oxygen Sensor Monitors
- Stake Bed & Open Trailer Systems



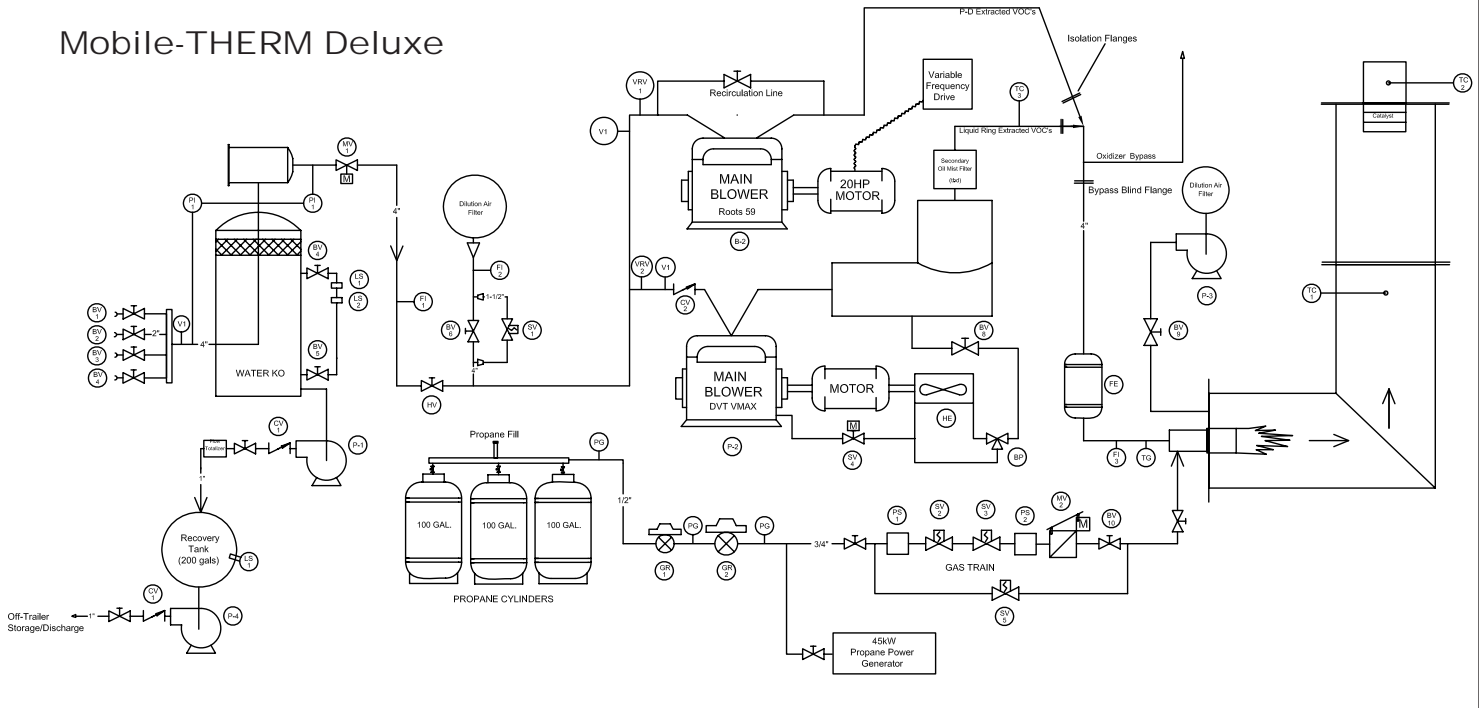
SOIL-THERM
EQUIPMENT, INC.

5310 Derry Ave, Unit C
Agoura Hills, CA 91301-4509
(818) 706-9875 FAX (818) 706-2145

www.soiltherm.com

Mobile-THERM Treatment Systems

Mobile-THERM Deluxe



Equipment Specifications

VOC Processing: to 14,000 ppmv
 Destruction Efficiency: >99.9%
 VOC's /hour (max): 160 #/hour
 Size: 8-ft x 18-ft x 13-ft (H)
 Weight: 10,000 - 20,000 lbs
 Well Vapor Connect: 4 - 2" vapor inlets
 Dual-Phase Blower: to 700 cfm, 28" Hg
 SVE Blower: to 800 cfm, 14" Hg
 Air Stripper Process: to 25 gpm
 OW Separator: 5 - 25 gpm
 Water Storage: to 250 gallons

Electrical: 45 kW Generator (propane or diesel) or external hookup
 Natural Gas: External hookup available
 Propane: 3/4", 50-500cfh @ 2-5 psig vapor
 Stack Height: 13-ft

Approvals: UL 508A Certified Control Panel
 SCAQMD Certified Permit (to 500 scfm)
 CSA Special Field Evaluations



**SOIL-THERM
EQUIPMENT, INC.**

5310 Derry Ave, Unit C
 Agoura Hills, CA 91301-4509
 (818) 706-9875 FAX (818) 706-2145

www.soiltherm.com