

# Micro-THERM SVE Systems



**Micro-THERM**  
4-ft x 3-ft skid



## EQUIPMENT FEATURES

Micro-THERM Remediation Systems are complete SVE thermal systems ready for cleanup operations in the smallest spaces. Easy to transport, install, and inexpensive to operate, Micro-THERM technology provides permanent extraction and destruction of VOC's.

**Flow:** 50 to 300 scfm, vacuums to 14" Hg

**Small Footprint:** Only 4-ft x 3-ft, 1400 #.

**SVE Blower:** The standard SVE Blower is rated for 220 cfm and vacuums to 14" Hg. Other blowers are also available, including 150 cfm dual phase water sealed pump to 28" Hg.

**Burner:** All stainless steel Jet-THERM burner, max 800,000 btuh, 100:1 turndown ratio.

**Dilution Air Blower:** Enables dilution of extracted VOC's on the pressure side of the SVE blower. Enhance control of **Micro-THERM** oxidizer without losing well vacuum requirements.

**Stainless Water KO:** 25-gallon water capacity with level switch controlled evpump.

**Stainless Steel KO Pump:** 1/2 hp Goulds stainless steel centrifugal evacuation pump.

## OPTIONS

- Catalyst
- Heat Exchanger
- Hi-Flow SVE Blower: 370 cfm, 10" Hg
- Dual Phase Extraction Blower
- High Vacuum SVE Blower
- Internet Access Telemetry & Control
- Enclosure
- LEL & Oxygen Sensor Monitors
- Single Axle Trailer



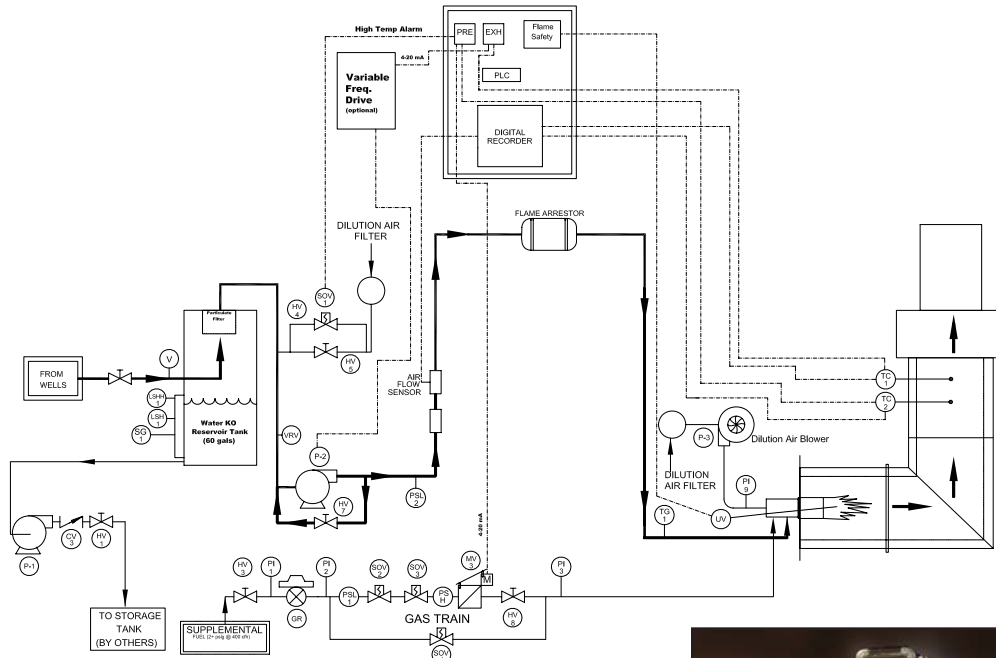
**SOIL-THERM**  
**EQUIPMENT, INC.**

5310 Derry Ave, Unit C  
Agoura Hills, CA 91301-4509  
(818) 706-2145 FAX (818) 706-2145

[www.soiltherm.com](http://www.soiltherm.com)

# Micro-THERM Remediation Systems

Each **Micro-THERM** gas-fired thermal system includes the following components: 4-ft x 3-ft heavy duty skid with forklift pockets, **Jet-THERM** all stainless burner, stainless steel water knockout, stainless steel vapor piping, water knockout filter element, Nema 4 electrical control box, main disconnect, regenerative SVE extraction blower (standard 8.5 hp, 220 cfm, 14" Hg), PLC control and digital display, hour meter, temperature and limit controller, air pressure switch, flame arrestor, and safety interlocks. Options include: catalyst module, heat exchanger, pressure air side dilution air blower, small single axle trailer, water knockout pump, dual phase liquid ring pump, various SVE blowers, and locking enclosure.



## Equipment Specifications

VOC Processing: to 12,000 ppmv  
 Destruction Efficiency: >99%  
 VOC's /hour (max): 35 #/hour  
 Size: 4-ft x 3-ft x 13-ft (H)  
 Weight: ~1200 lbs  
 Well Vapor Hookup: 2-1/2"  
 Electrical: 230VAC, 3-phase, 60Hz  
 (single phase also avail.)  
 Natural Gas: 3/4", 300 cfh @ 2-5 psig  
 Propane (vapor): 3/4", 150 cfh @ 2-5 psig  
 Stack Height: 13-ft  
 Approvals: UL 508A Certified Panel  
 SCAQMD Certified Permit



**SOIL-THERM**  
**EQUIPMENT, INC.**

5310 Derry Ave, Unit C  
 Agoura Hills, CA 91301-4509  
 (818) 706-2145 FAX (818) 706-2145

[www.soiltherm.com](http://www.soiltherm.com)